



Federaal Kenniscentrum voor de Gezondheidszorg
Centre Fédéral d'Expertise des Soins de Santé
Belgian Health Care Knowledge Centre

Designing integrated care policy

Which data are needed?



Context

- **Project commissioned by the Minister of Public Health**

- **Project carried out by:**
 - **KCE:** Benahmed N, Bourgeois J, Lefèvre M, Van den Heede K
 - **UCLouvain:** Lambert AS, Macq J, Schmitz O
 - **PAQS :** Herbaux D, Rappe P, Schoonvaere Q, Van Innis AL
 - **ShiftN :** Op de Beeck S, Vandenbroeck P
 - **Profacts/HICT :** Schoonaert L, Vercruysse H, Vlaemyck M, De Groote J

Agenda



1

Integrated care in Belgium



2

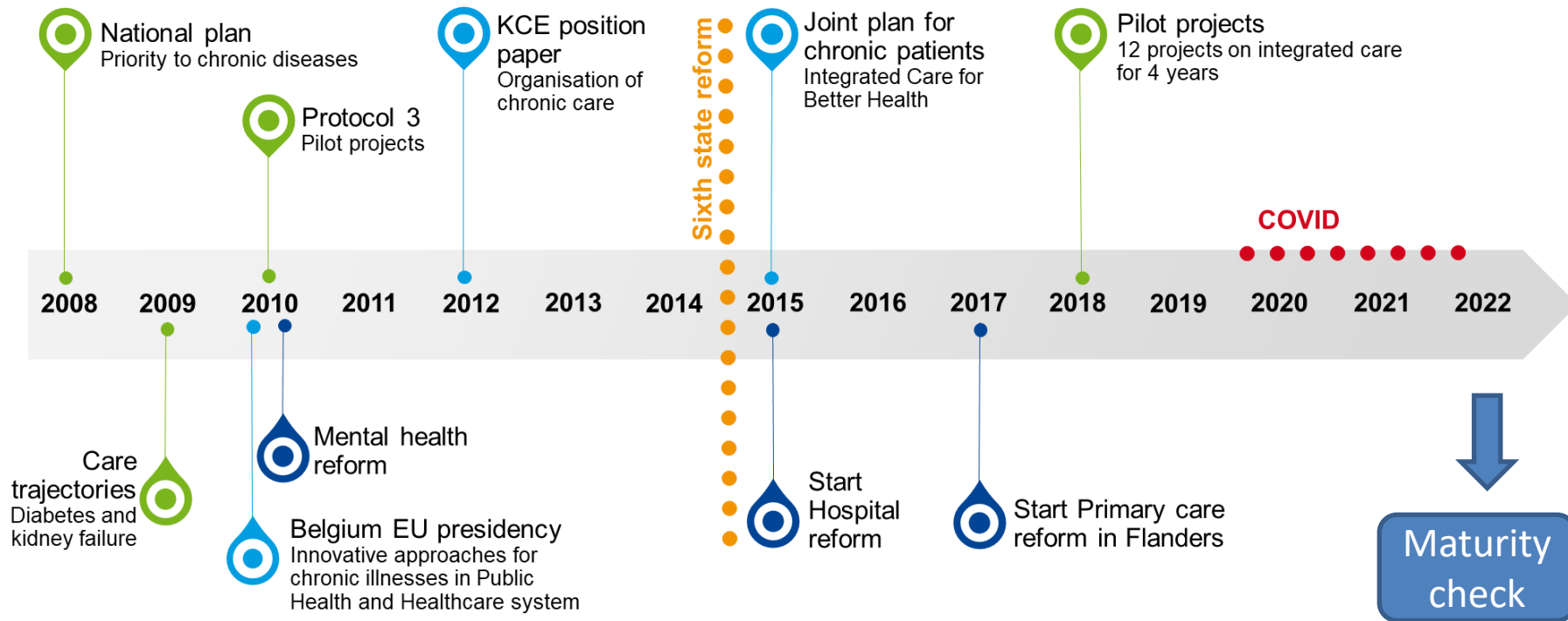
Designing policy for further implementation

3

Data needs for more integration of care

1

Integrated care in Belgium



1

Integrated care in Belgium



Maturity check by 865 professionals

1

Integrated care in Belgium



Maturity check by 1298 chronic patients

Agenda



1

Integrated care in Belgium

2

Designing policy for further implementation

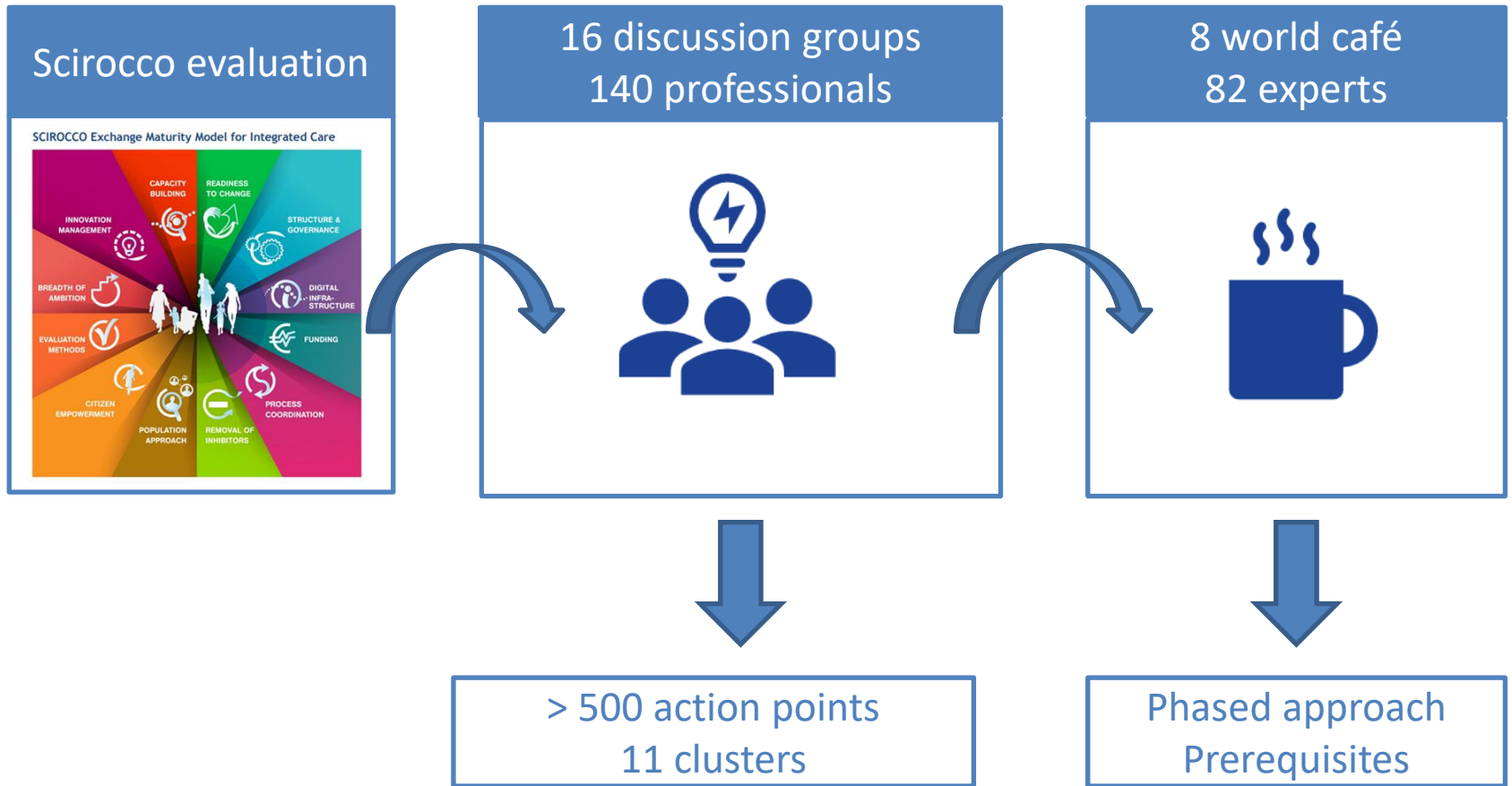


3

Data needs for more integration of care

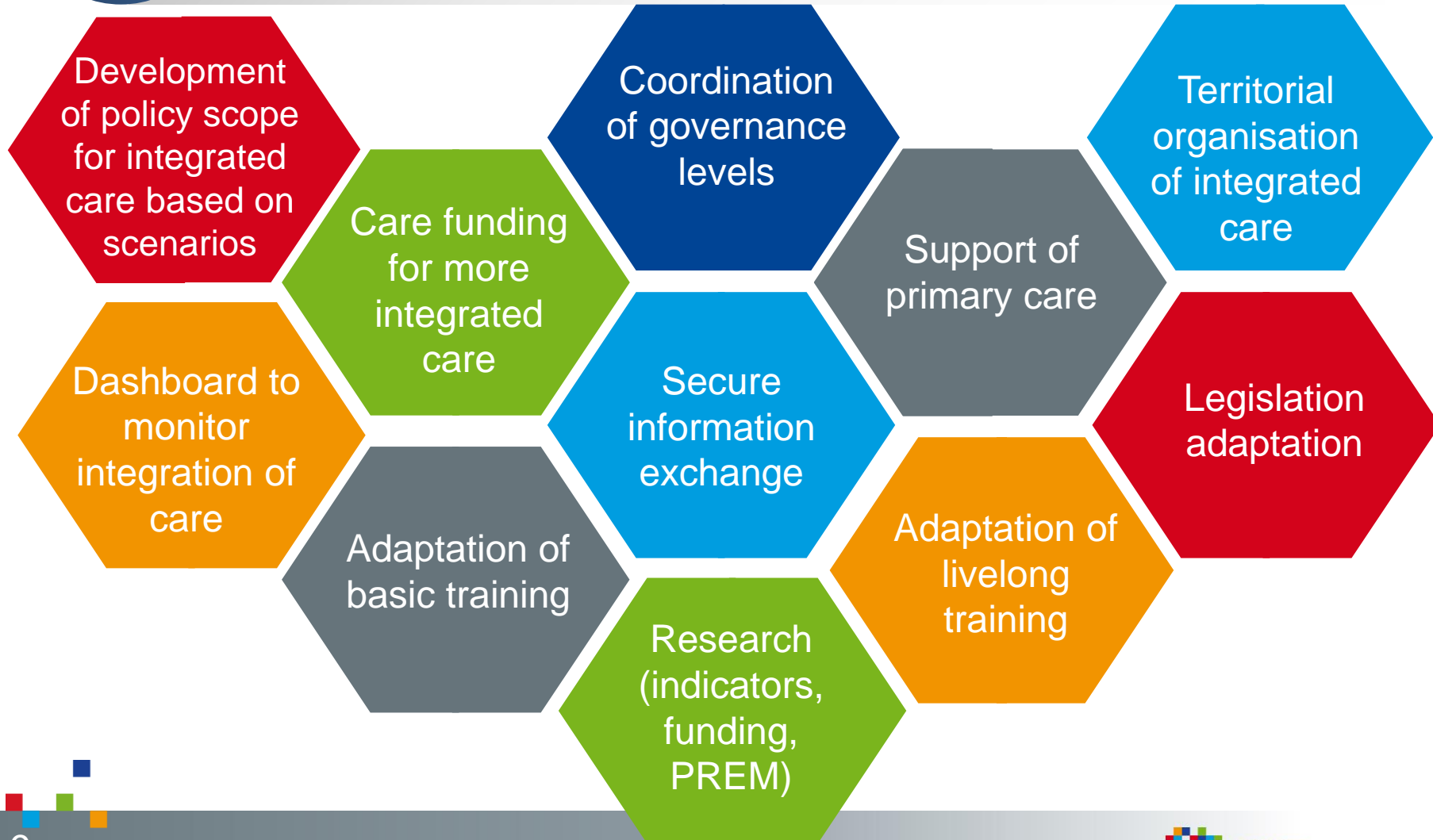
2

Designing policy for further implementation



2

Designing policy for further implementation



Agenda



1

Integrated care in Belgium

2

Designing policy for further implementation

3

Data needs for more integration of care



3

Data needs for more integration of care

Why data is crucial to develop integrated care policies?

To adapt the care supply to the needs of the population (population management):

- 1) To define population in geographical territories as unit of care integration at micro, meso and macro level
- 2) To define the health and social care needs of the population in each geographical unit
- 3) To adapt the care supply according to the identified needs taking into account the current care supply

3

Data needs for more integration of care

Which data is available ?

Care supply

Care consumption

Patient social care data

Data needs for more integration of care

Which data is available ?

Healthcare providers

- ⇒ Licensed to practice (registry of healthcare professionals)
- ⇒ Licensed for the mandatory health insurance (NIHDI)

Healthcare institutions

- ⇒ Pharmacies and pharmacy managers (Federal agency for medicines and health products)
- ⇒ Agreement of health institutions such as hospital, rehabilitation and long-term care institutions, residential care (homes for older people, nursing homes, day-care centres) (Federated entities)

3

Data needs for more integration of care

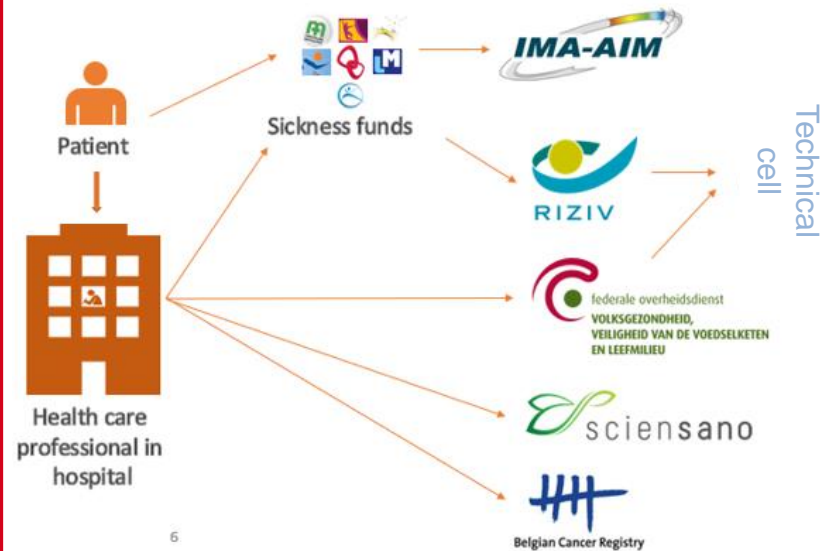
Which data is available ?



Ambulatory contact



In hospital contact



Patient record, Nursing record, RHM/MZG, e-Birth,..

Care consumption

Technical cell



3

Data needs for more integration of care

Which data is available ?

Social security database:

⇒ Administrative data used to give a preferential reimbursement plan to some target groups

Public centre for social assistance

⇒ Data on intervention

Regional registries

⇒ Aid and care for homeless

⇒ Aid and care for the most vulnerable...

Social care data

3

Data needs for more integration of care

What are the challenges to create a data ecosystem to tackle the need of information to organise integrated care?

Integrated care needs indicators based on :

- Findable
- Accessible
- Interoperable and
- Reusable data

taking into account RGPD and European Health Data Space for people and science (Improving the use of health data for research, innovation and policymaking)

3

Data needs for more integration of care

Challenges to create a data ecosystem to tackle the need of information to organise integrated care

However :

- Multiple data sources (Sickness funds, Social institutions, Administrations)
- Data are mainly collected for billing purpose but also for manage the patient's treatment and legal obligations
- Some data from patients' records are in multiple languages (French, Dutch, German) and based on several standards (ICD-9 ICD-10, ICD-O, ICPC-2, DICOM, ICF, Loinc...)

3

Data needs for more integration of care

Challenges to create a data ecosystem to tackle the need of information to organise integrated care

⇒ Roadmap 4.0 to create BIHR (Belgian Integrated Health Record) = collaborative environment

Objectives:

1. Improve quality and continuity of care,
2. Support for the care process,
3. Support for the citizen/patient empowerment and engagement,
4. Support for the care providers,
5. Use of data to improve the care process,
6. Use of data for research purposes,
7. Use of data for population health management

Take home messages

- Policy on integrated care focused on care organisation, funding, research and, training of the health and social care professionals
- Data are needed for population management =>
 - To define geographical territories
 - To define the health and social care needs
 - To adapt the care supply
- Data must be FAIR but data sources, languages and standards are multiple. Data are not always properly coded according the standards and are collected mostly for billing purpose.

Take home messages

- Implementation of integrated care policy needs integrated data



More info

- **Link to the report :**

<https://kce.fgov.be/en/towards-integrated-care-in-belgium-stakeholders-view-on-maturity-and-avenues-for-further-development>

- **Personal contact:**

Nadia.benahmed@kce.fgov.be

